



BUSINESS & LAW



I.T



ENGINEERING



CREATIVE



MULTIMEDIA UNIVERSITY

CYBERJAYA | MELAKA



CYBERJAYA MELAKA



CYBERJAYA
1999



MELAKA
1996

Malaysia's
First Private University



Assoc. Prof. Ts. Dr. Ervina Efzan Mhd Noor
Director, Industrial Collaborations
And Engagement Centre
+606 – 2523 320
ervina.noor@mmu.edu.my

Computer Science



Big Data Analytics | Artificial Intelligence | Machine Learning | Deep Learning | Blockchain | Cybersecurity | Cryptography | Image Processing | Pattern Recognition | Augmented Humans | Augmented Reality | Communication Networks | Cloud Computing |

Creative Multimedia



Virtual Reality | Animation | Computational Arts | Culture & Heritage | Interface Design | Media Arts | Storytelling | Nonlinear Films | Interactive Media | Media Advertising | Social Media Communications | Fake News Recognition | Strategic Communications | e-Learning | Games Design |

Engineering



6G Communications | Antenna Design | IoT | Advanced AI | Nanomaterial | Specialty Optical Fibers | Energy Systems | Solar Systems | Software Defined Network | Network Function Virtualization | Drone & Robotics Technology | Radar systems | Remote Sensing |

Business & Law



Knowledge Management | High Performance Work Culture | Design Thinking | Law & Technology | Islamic Finance & Waqf | Consumer Studies | Digital Marketing | Fintech | Digital Accounting | Financial Engineering | Cyber Law |



Fiber Optic Sensor

Prof. Ridzuan Mokhtar (ridz@mmu.edu.my), Dr. Siti Azlida Binti Ibrahim (azlida@mmu.edu.my)

Fabrication, characteristic of materials, fluids system, Failure analysis

- Assoc. Prof. Ts. Dr. Ervina Efzan Mhd Noor (ervina.noor@mmu.edu.my)

Systems modelling, prediction, process control

- Assoc. Prof. Dr. Tan Ai Hui (htai@mmu.edu.my), Dr. Cham Chin Leei (clcham@mmu.edu.my)

Technology Innovation: Evaluating the extent of awareness and knowledge

- Nur Baiti Binti Shafee (norbaiti.shafee@mmu.edu.my)

Optimize parameters, optimal parameters settings

-Dr Nor Azlina Aziz (azlina.aziz@mmu.edu.my)

Predictive analytics, machine learning, computer vision, big data analytics

- Dr. Guo Xiaoning (guo.xiaoning@mmu.edu.my), Dr. Tan Yi Fei (yftan@mmu.edu.my)

Rapid prototype, DOE, simulation, modeling

-Dr Norhidayah Mohammad (norhidayah.mohamad@mmu.edu.my)

Image Processing and Analysis and Pattern Recognition

- Assoc Prof Dr. Mohammad Faizal Bin Ahmad Fauzi
(mohammad.faizal.ahmad.fauzi@mmu.edu.my)

Malaysia's

First Private University



Facilities



**Engineering
Labs**



**High Speed
Computing Lab**



**Creative
Work Lab**



**Interactive
Multi-touch
Classroom**



Exhibition Hall



Digital Home



Lecture Hall



Digital Library



Sports

Facilities in MMU

FACILITIES

Probe Station
in Clean Room



Facilities in MMU

FACILITIES

Pulsed Laser
Deposition



Facilities in MMU

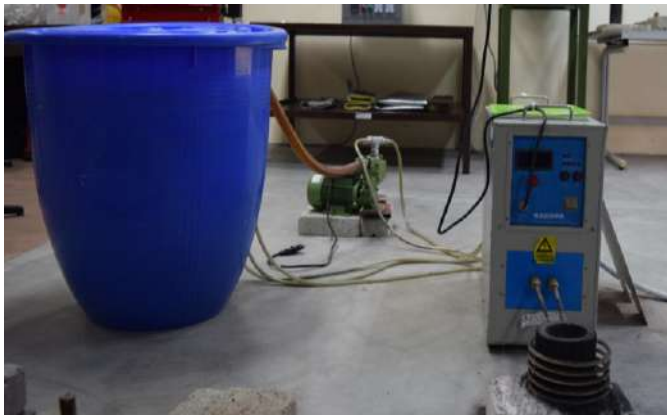


Facilities in MMU



Facilities in MMU

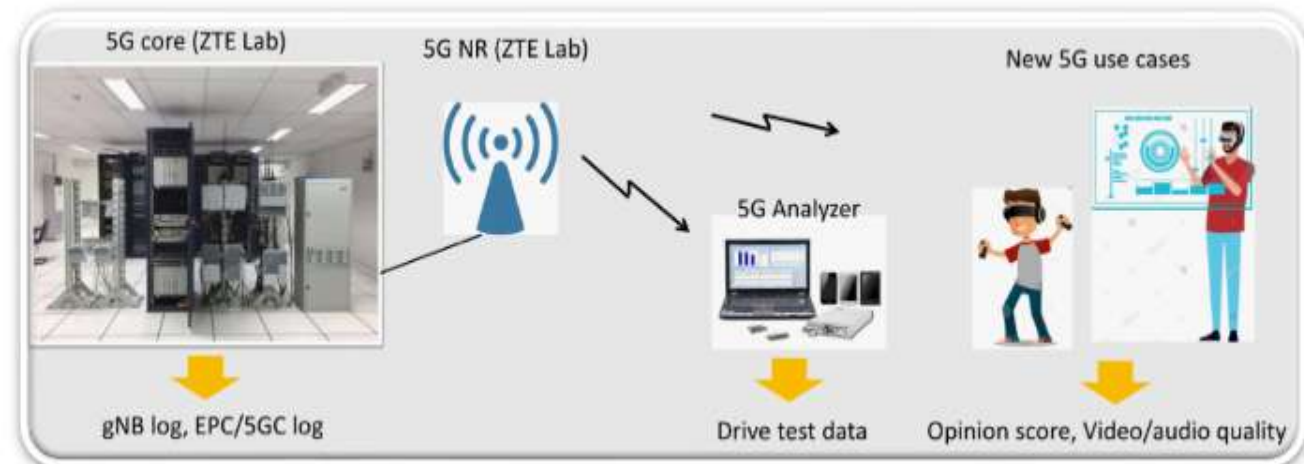
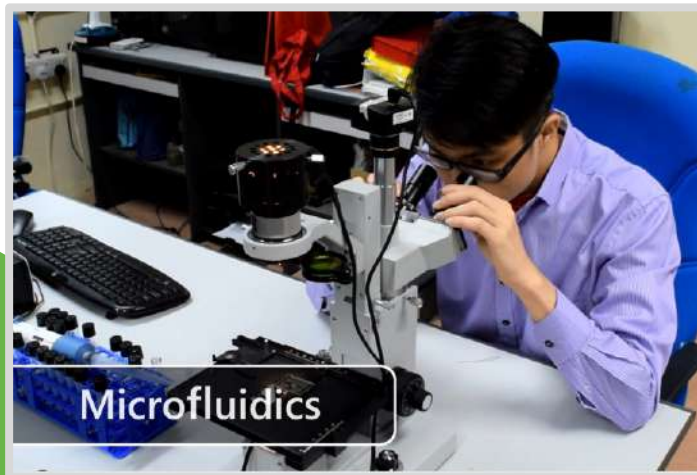
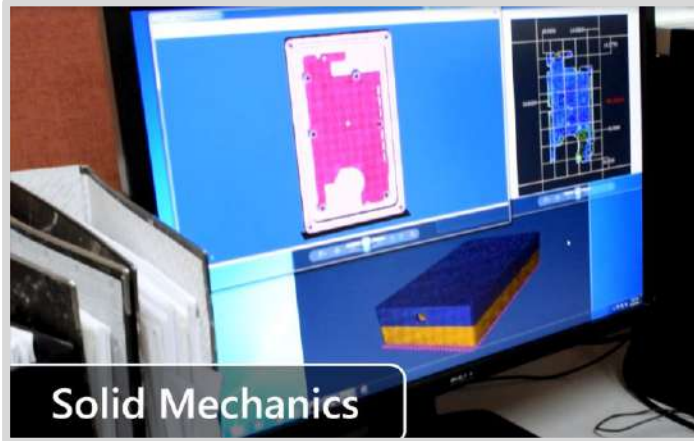
Furnace



Tribology Equipment



Facilities in MMU



Facilities in MMU

3D CINEMA HALL



MOCAP STUDIO (Motion Capture Studio)



MCP STUDIO (Multi Camera Studio)



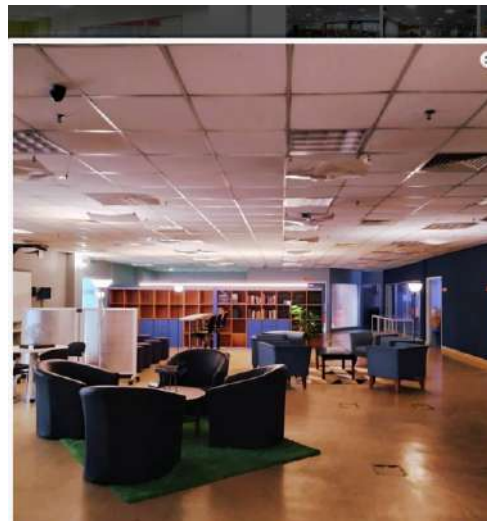
3D Printing Lab



E-Theatre



Facilities in MMU

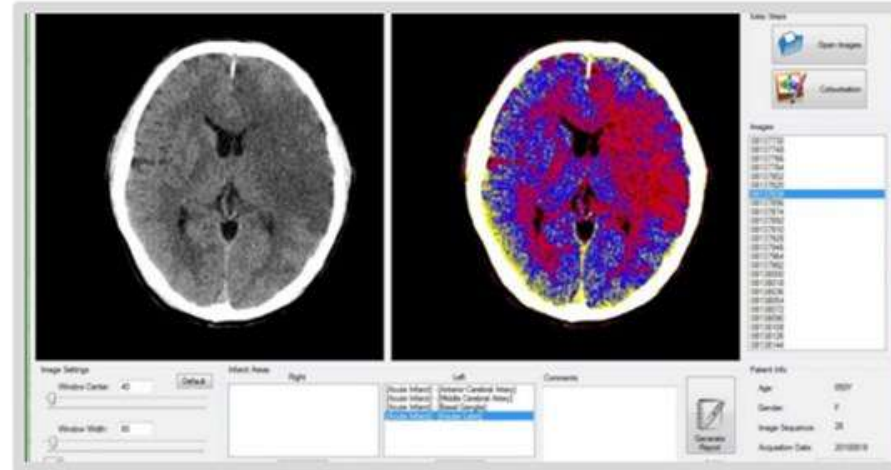
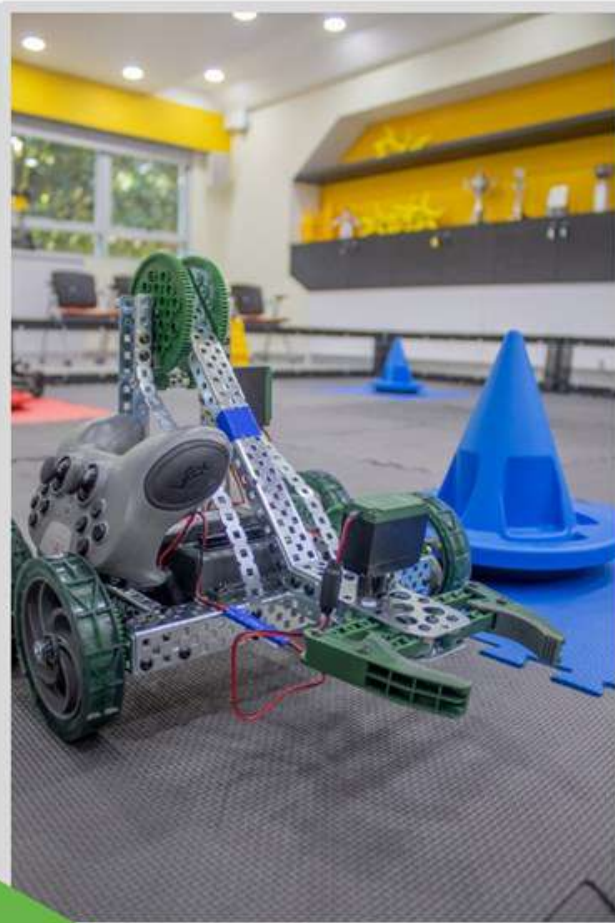


Research in MMU

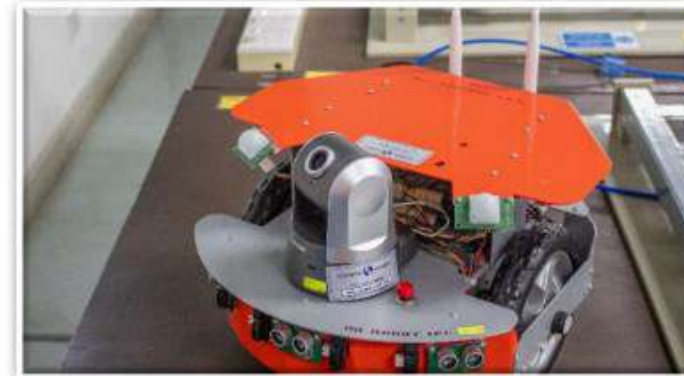
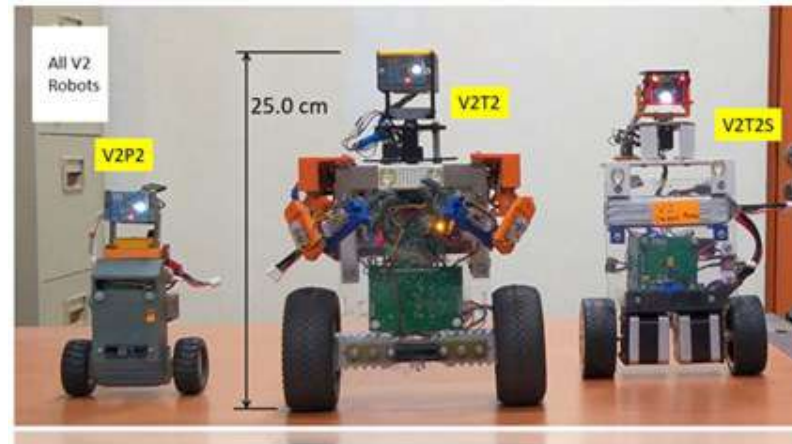
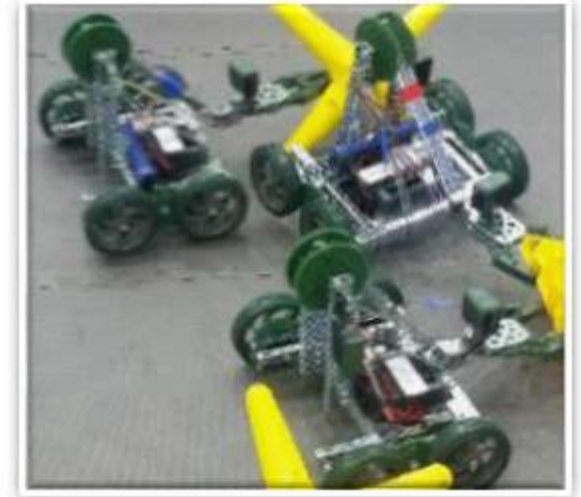
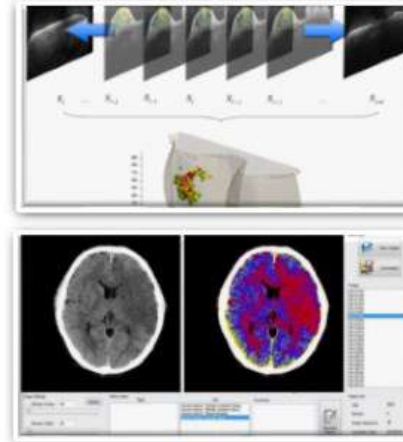


Real setup in MMU where the different production size criteria and prediction models are being developed

Research in MMU



Research in MMU



Types of Partnership Model



Join R&D

Joint R&D between MMU researchers and collaborative partners from industry & overseas.



Staff Exchange

MMU and collaborative partners (overseas and/or industry) exchange staff for R&D or academic purposes.



Namesake Labs

Collaborative labs for R&D or teaching on MMU campus named after industrial companies or overseas institutions.



Adjunct Staff

Staff from industry or overseas institutions are appointed as adjunct staff of MMU for R&D or teaching engagements.



Student Exchange

Inbound or outbound students (UG or PG) on exchange between MMU and overseas institutions.



Supervision/Mentoring

Staff from industry or overseas jointly supervising students in projects.



Student Ambassador Scheme

High-profile students are selected by industry to be their student ambassadors, engaged in jointly organized events, train-the-trainer workshops and industry networking events.



Internship

Students are attached to companies as staff for some months to undergo structured industrial training.



Thank you!



mmu.edu.my

2020 Multimedia University. All rights reserved.

Information provided is up to date and accurate.
MMU reserves the right to make, without notice, amendments, or modification, as may deem necessary.