



TATI UNIVERSITY COLLEGE

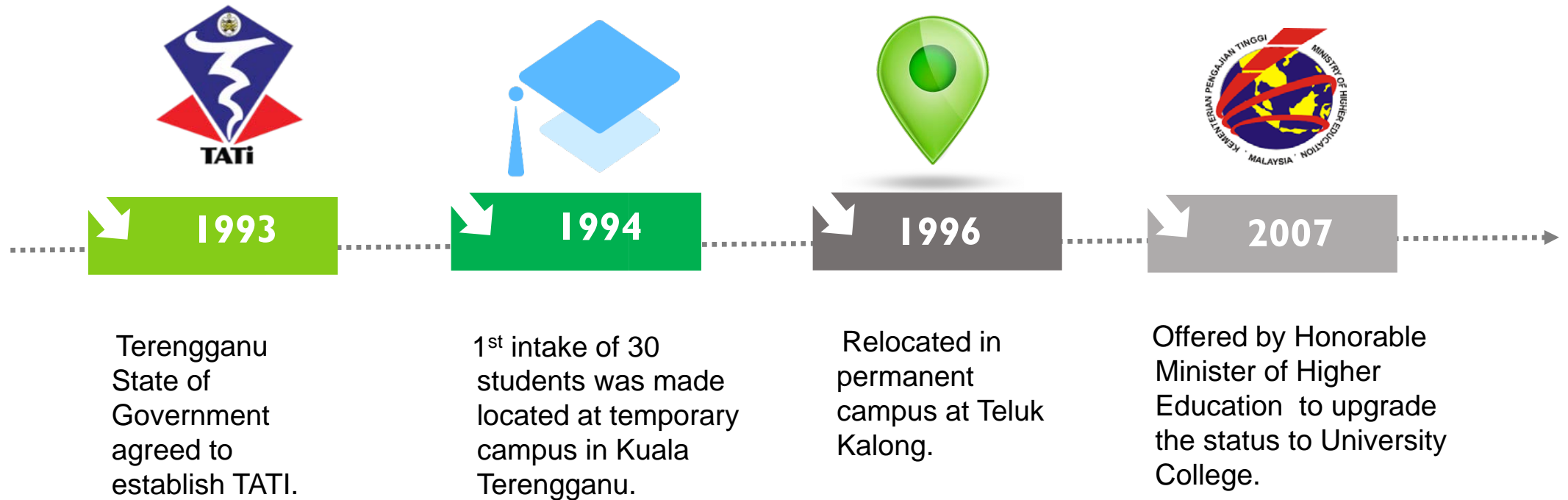


TATI UNIVERSITY COLLEGE (TATIUC)
KAMPUS TELOK KALONG,
KEMAMAN, 24000
TERENGGANU

“SPURRING TODAY’S TECHNOLOGY FOR A SUSTAINABLE LIFE”

INTRODUCTION

Infographic



Fast Fact:



288
Staff

Academic Staff Qualification

| |
|---------------|
| PhD : 20 |
| Master : 66 |
| Bachelor : 29 |
| Diploma : 10 |



360.8
Acres



Wholly owned
by
Terengganu
State
Government



NICHE AREAS

Tooling Engineering

CAD / CAM

Mechatronics

Mechanical Engineering

Chemical Engineering

Environmental

Polymer Engineering

Non-Destructive Testing (NDT)

Operation Management

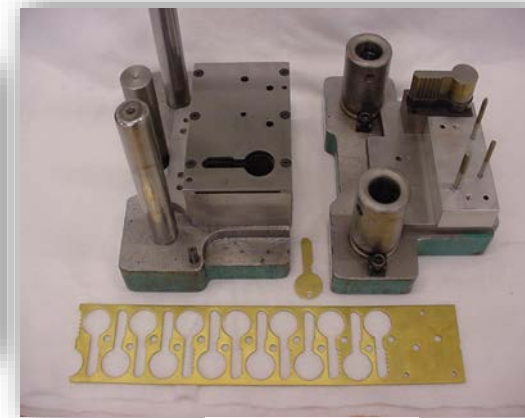
Robotics

Computer Networking

FACULTY OF MANUFACTURING ENGINEERING TECHNOLOGY



Mould



Press Tool

FACULTY OF ELECTRICAL & AUTOMATION ENGINEERING TECHNOLOGY



FACULTY OF CHEMICAL ENGINEERING TECHNOLOGY



Unit Operation



Polymer Processing



Purification



Environmental Lab



Liquid-liquid Extraction



Basic Chemistry

FACULTY OF COMPUTER, MEDIA & TECHNOLOGY MANAGEMENT



Recent Research Projects

Drinking Straw From Natural Palm Steam Glucose

Biomaterials Derived From *Polymesoda expansa* Shell As Promising Anodyne Sunscreen

Evaluation Of Inhibitive Effect Of *Musa paradisiaca* on Marine Corrosion Of Mild Steel

Elucidate the Mechanism of Anion Conduction on Methylcellulose Base Membrane for Direct Ethanol Fuel Cells Applications

Tribological investigation on interfacial bonding of electroless Nickel-YSZ composite coating on high speed steel substrate

Mechanisms of Heavy Metal Adsorption from Treated Banana Peel Hydrochars Synthesized via Hydrothermal Carbonization

A Fundamental Study of Intrusion Detection System (IDS) using Hybridization of Artificial Neural Network (ANN), Particle Swarm Optimization (PSO) and Magnetic Optimization Algorithm (MOA)

Effect Of Non-Ionic Surfactant On Nanofiltration-Surfactant Membrane Performance For Waste From Textile Industry

Development Of Prototype Underwater ROV For Search And Rescue Around Terengganu Offshore

Design Improvement And Fabrication Of Portable Mini Press Bearing Machine

Development Of Hacksaw Machine For Teaching Aided Tool

Recent Research Projects (Cont.)

Optimisation Of Vanadis Tool Steel Treatment For Universal Heavy Duty Chopper

Cyberbullying Awareness Campaign Via Augmented Reality And Virtual Reality

The Effect Of $\text{TiO}_2/\text{Al}_2\text{O}_3$ Hybrid Nano-Cutting Fluid Onto The Al_3I_9 Aluminum Alloy Turning Process

Design and implementation of piezoelectric sensor array for detecting of multiple cracks on pipeline (PENDT)

The anatomical parenchyma and vascular bundles of monocotyledon under chemical extraction method

Elucidation and correlation of multi fingered hand device for rehabilitation

Development of new modified euler algorithm in differential equation

Investigation on mechanical properties of electroless Nickel-cubic boron nitride coating on high speed steel and carbide substrates for aerospace materials

Investigation Path Planning for Mobile Robot using Intelligent Techniques

Significant Discretization technique of network traffic dataset

Development of IOT transponder system for efficient flood evacuation process

ACADEMIC & INDUSTRIAL PARTNERS

Luar Negara



JEPUN

- MIE University
- TOSOH Advanced Materials Sdn Bhd
- KUKA Robotic Automation
- Nippon Bunri University



INDONESIA

- Universiti Sumatera Utara
- Syiah Kuala University Campus Darussalam Banda Aceh
- Swiss German University-Asia (SGU), Indonesia
- Institut Teknologi Bandung (ITB)
- Universitas Islam Makassar (UIM)



CHINA

- Islam Association Of Ningxia Hui Autonomuos Region
- Gansu Muslim Commerce Chamber China



UNITED KINGDOM

- Queen's University Belfast
- The University of Northampton, UK



SWITZERLAND

- Ingenieurschule of St. Gallen, Switzerland



NIGERIA

- Foundation for Youth Development (FYD), Nigeria



JORDAN

- Al Tatweer for Public Safety, Amman, Jordan

- Yaskawa Electric Corporation
- Alife Robotics Corporation ltd, Japan
- Yamatake Engineering (M) Sdn. Bhd.

- University of Padjadjaran
- Bogor Agricultural University, Indonesia
- STMIK Royal Kisanan, Sumatera Utara Indonesia
- AMIK Royal Kisanan, Sumatera Utara Indonesia
- Politeknik Manufaktur Bandung

- The Government of Zhangjiachuan Hui (Muslim) Autonomous Country, Gansu, China
- Shougang Institute of Technology & Eastern Steel Sdn Bhd



IRELAND

- University College Dublin



BRUNEI

- Universitas Hasanuddin



KOREA SELATAN

- Kookmin University Seoul

Dalam Negara

- PERDA
- TECHNOLOGY PARK
- UNIMAP & PETMAL OIL HOLDING
- JABATAN ALAM SEKITAR, KEMENTERIAN SUMBER ASLI
- YAYASAN NAAM, FEDERATION TRAINING & BEYOND PETROLEUM
- TESDEC
- LINCOLN UNIVERSITY COLLEGE
- SIRIM BERHAD
- DREAM TECHNOLOGY SYSTEM SDN. BHD.
- INSTITUT KT SKILL
- MyIPO
- UiTM TERENGGANU
- SERBA DINAMIK SDN. BHD.
- ADTEC KEMAMAN
- MySET
- DAYATECH ACADEMY SDN. BHD.
- KOLEJ VOKASIONAL WAKAF TEMBUSU
- USM, TATIUC, UMP & VIRTUAL REALITY SOLUTION SDN. BHD.
- OPTIMISTIC ORGANIC SDN. BHD.
- INTEGRATUS MAINTENANCE SERVICES SDN. BHD.
- REAL CHUKAI FOOTBALL CLUB
- TELEKOM MALAYSIA BERHAD

MAIN STRUCTURE



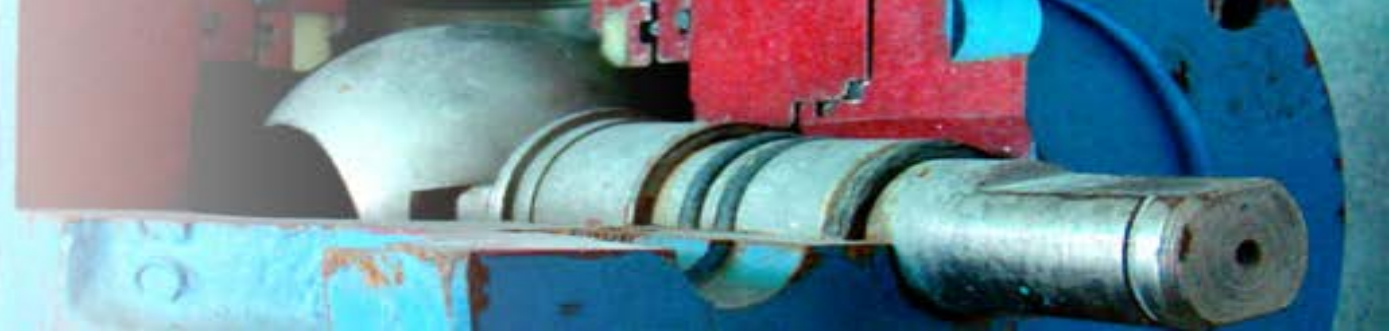
- Machining
- Tooling Engineering
- Maintenance & Servicing
- Plastic Technology



- Non-Destructive Testing
- Welding Inspection

TATI
SKILLS
TRAINING
CENTER

- Skill Courses
- Malaysia Skills Certificate
- Professional Courses



WIRECUT MACHINE



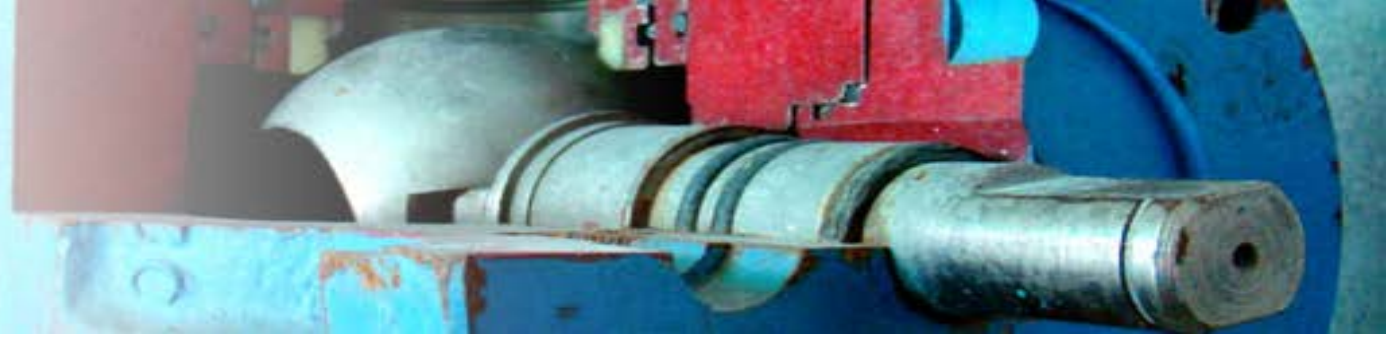
HYDRO TEST MACHINE



SUPER DRILL



HEAT TREATMENT



VALVE SERVICES



TEST BENCH – PSV TESTING

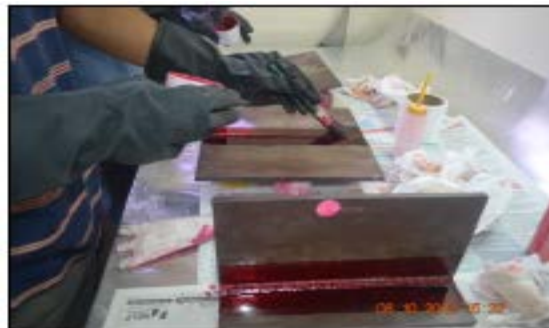
Ruane-TATI Sdn. Bhd.



ULTRASONIC TESTING TRAINING (PCN)



PENETRANT TESTING TRAINING (PCN)



MAGNETIC PARTICLE TESTING TRAINING (PCN)



EDDY CURRENT TESTING TRAINING (PCN)



RADIOGRAPHY TESTING TRAINING (JPK)



RADIOGRAPHIC INTERPRETATION TRAINING (PCN)





ULTRA SONIC TESTING
EQUIPMENT &
SAMPLE

TATI SKILLS TRAINING CENTER

COURSES

Run at TATIUC under INSEP, WTPP, PTPK and MOF fund (1 week – 6 months)



ENGINEERING OPERATION AND MAINTENANCE

COURSES



BASIC OFFSHORE SAFETY & EMERGENCY TRAINING (BOSET)

COURSES

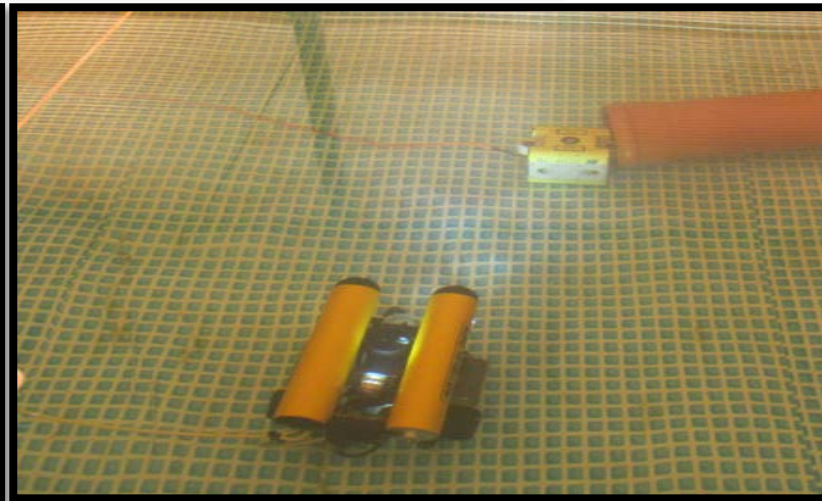


HABITAT TECHNICIAN TRAINING



GRAPHIC AND MEDIA TECHNOLOGY

COURSES



ROV TRAINING

THANK YOU

**TATIUC
DRONE**

Contact Us:
Research Management & Postgraduate Center
Head of Center,
Assoc. Prof. Ts Dr Nor Bahiyah bt Baba
+609 860 1029
bahiyah@tatiuc.edu.my

Ts Ahmad Joraimie b Mohamad
+609 860 1475
joraimie@tatiuc.edu.my

TATI University College (TATIUC)
TATIUC Campus
Jalan Panchor, Teluk Kalong,
24000 Kemaman,
Terengganu Darul Iman.
Tel : 09-860 1000 Fax : 09-8635863