

# RUBBER UPSTREAM OVERVIEW

Presented by :

K.J. Yap from MEOA

**THE MALAYSIAN ESTATE OWNERS' ASSOCIATION**



*Rubber Estate  
Malaysia*

# Topic to cover

- What is rubber?
- How did rubber prosper and collapse in Malaysia? And prosper again..?
- Rubber in Malaysia today
  - Challenges
  - Opportunities



# What is rubber?



# What is rubber made of?





# History of Natural Rubber



# Invention of Vulcanization gave birth to rubber industry

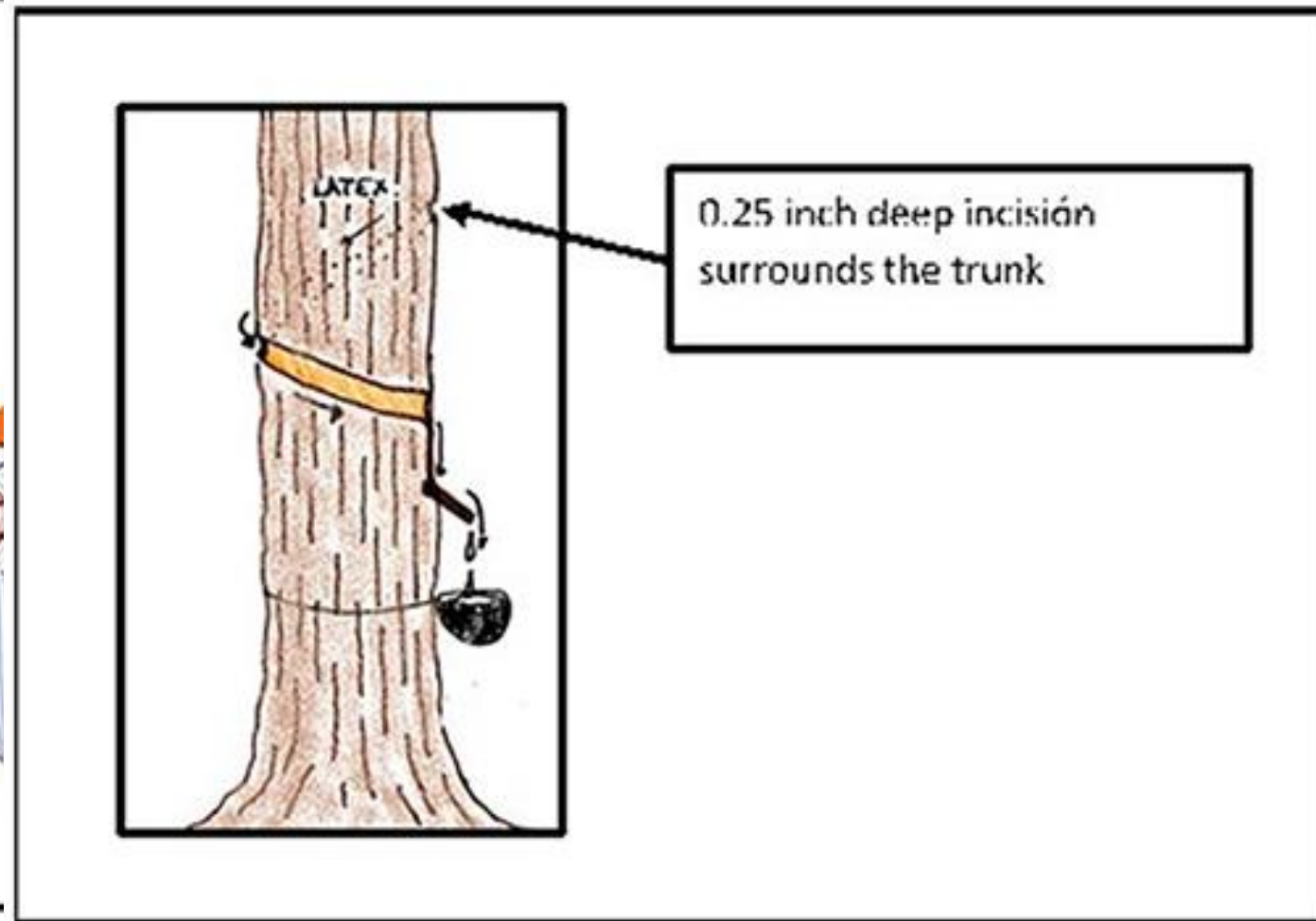
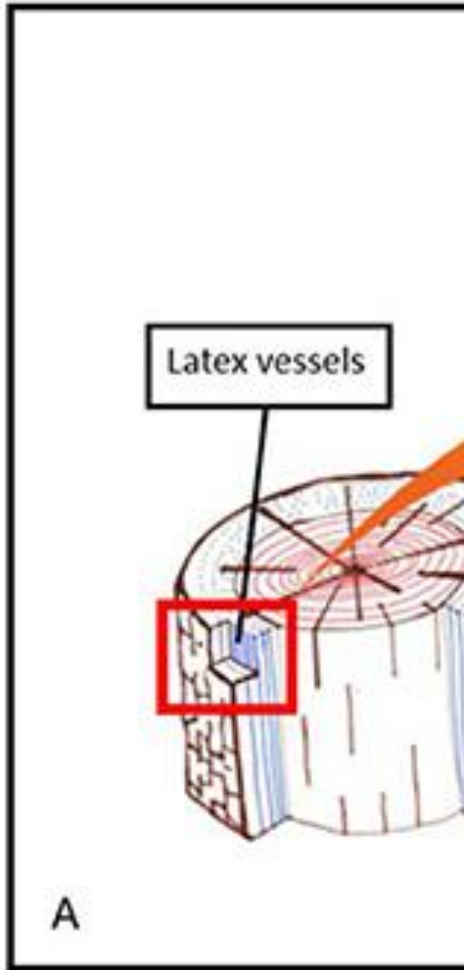




# First bicycle to have pneumatic tyres



# Hevea Brasiliensis



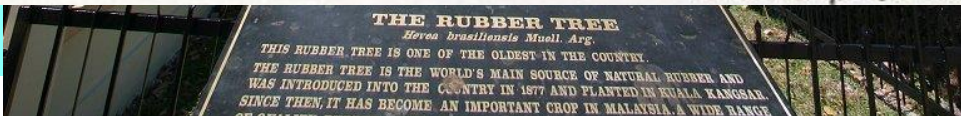


Hc



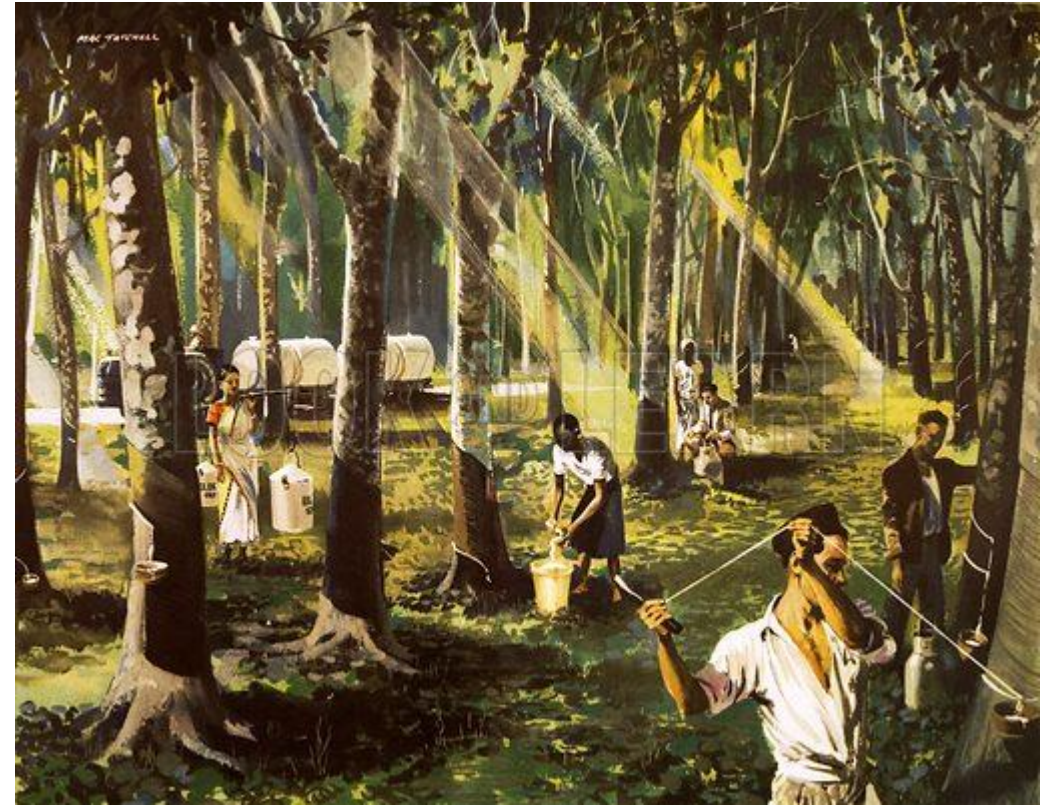
**Le caoutchouc. 2.**  
Incision des arbres à caoutchouc.

Voir l'explication au verso.





# The Golden era of Rubber (Hevea Brasiliensis) Plantation in Malaysia





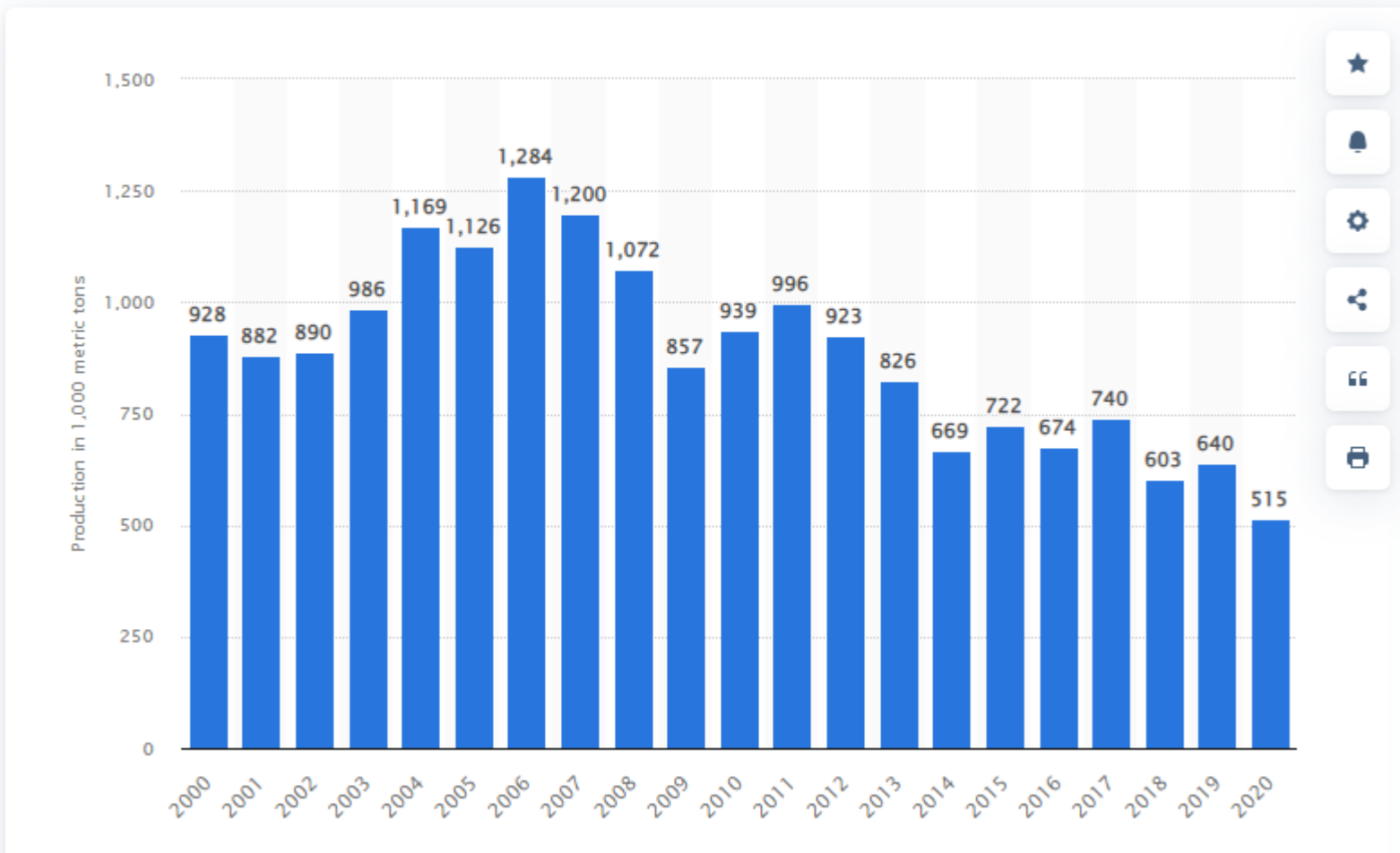




# The Impact to Rubber Plantation Industry

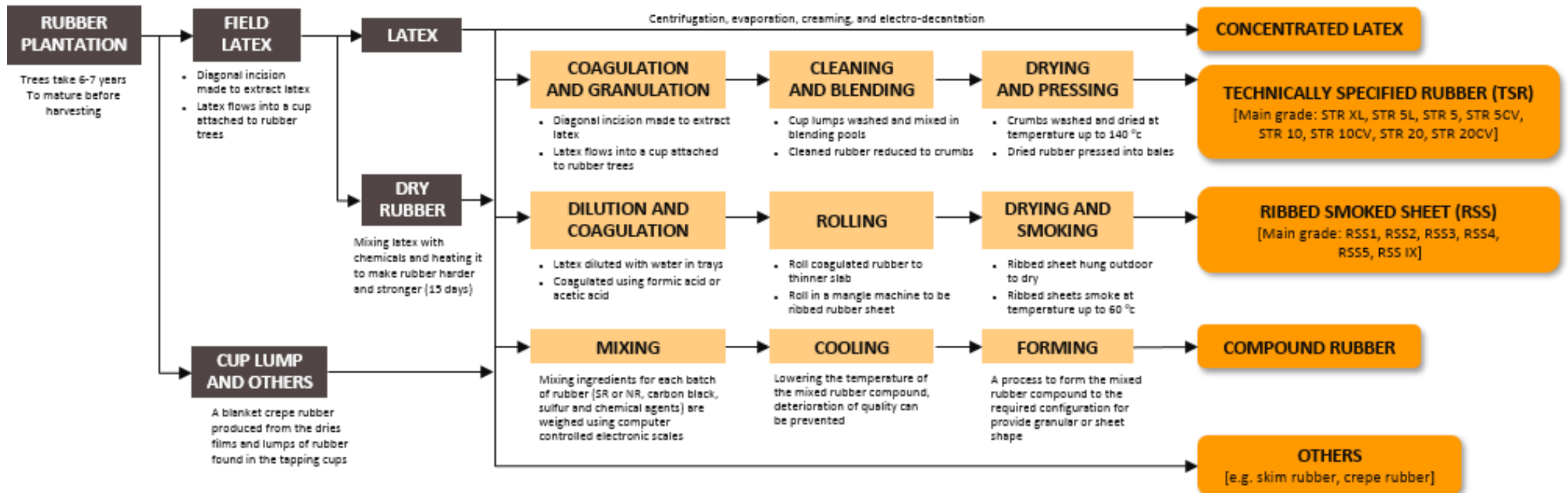
Total rubber production of Malaysia from 2000 to 2020

*(in 1,000 metric tons)*





# Production Process of Midstream Natural Rubber Products



# Golden Era of Rubber in Malaysia ... again? Or not?

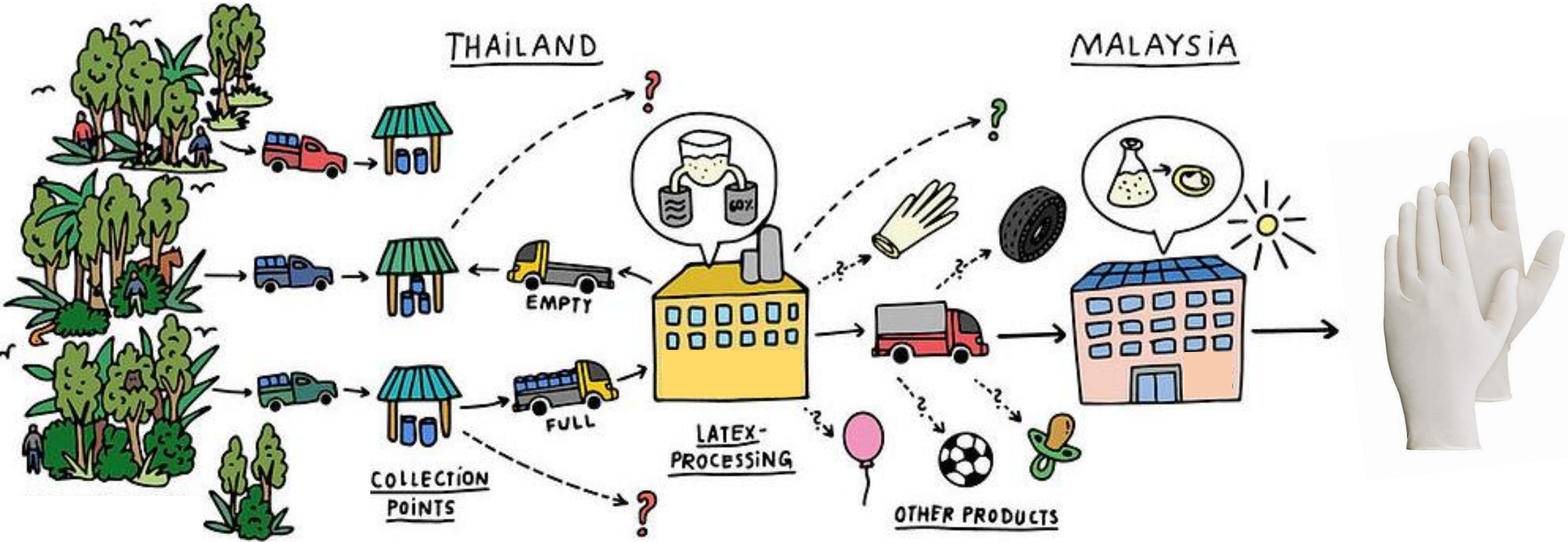




## Malaysia Natural Rubber Statistic - 2003 & 2022 (Metric Tonnes)

	<u>2003</u>	<u>2022</u>	
<b>Production</b>			
Estate	76,363	44,962	
Smallholders	909,284	331,038	
	<b>985,647</b>	<b>376,000</b>	<b>-61.9%</b>
<b>Import</b>			
Latex	210,022	343,874	
Other Raw Material	226,530	976,126	
	<b>436,552</b>	<b>1,320,000</b>	202.4%
<b>Domestic Consumption</b>			
Gloves	183,714	362,650	
Rubber Thread	72,773	42,786	
Tyres & Tubes	76,148	34,254	
Others	88,140	46,396	
	<b>420,775</b>	<b>486,086</b>	15.5%
<b>Export</b>			
SMR Grades	1,012,012	886,870	
Others	97,074	18,394	
	<b>1,109,086</b>	<b>905,264</b>	-18.4%
<b>TOTAL RUBBER TRADED (MT)</b>	<b>2,952,060</b>	<b>3,087,350</b>	4.6%

# Malaysia rubber today





# Malaysia rubber today



So what are the **challenges** and **opportunities**  
in rubber upstream?





# Opportunities

**1.1m hectare of rubber trees**

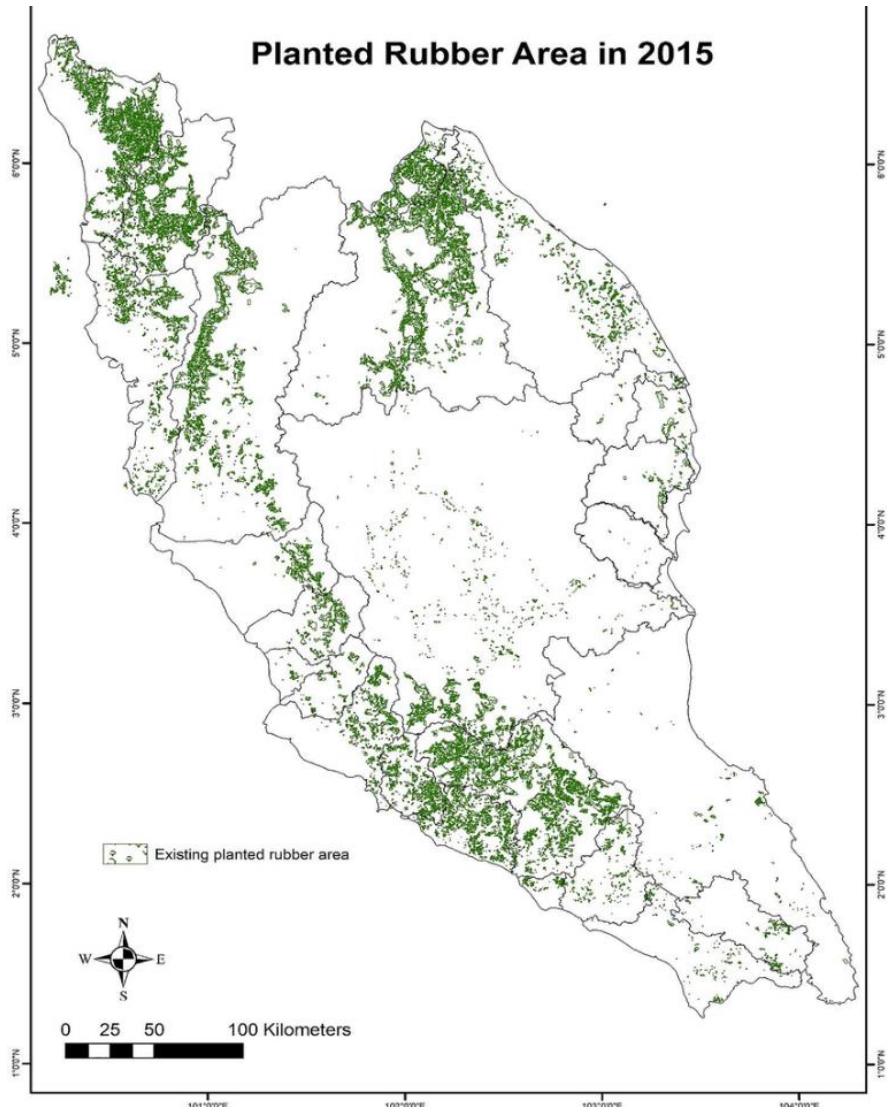
**POTENTIAL RUBBER YIELD / YEAR**

**1.7 MILLION TONNES**

**APPROXIMATELY REVENUE OF**

**RM 12 BILLION**

**WHERE'S OUR RUBBER?**



# What are the challenges faced by rubber plantations?







e



# RUBBER TAPPING

Ut wisi enim ad minim veniam, quis nostrud exerci tation ullamcorper suscipit laboris nisi ut aliquip ex ea commodo consequat.

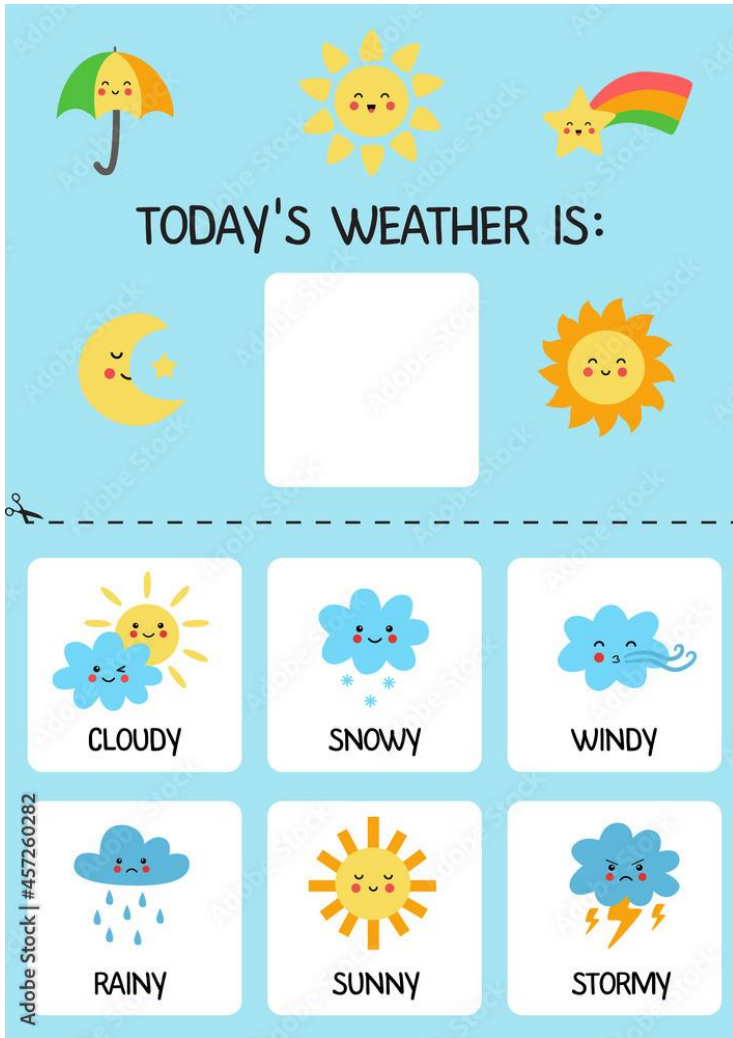


Rubber collection





# Before Work Preparation



# Rubber Collections









# Field Maintenance



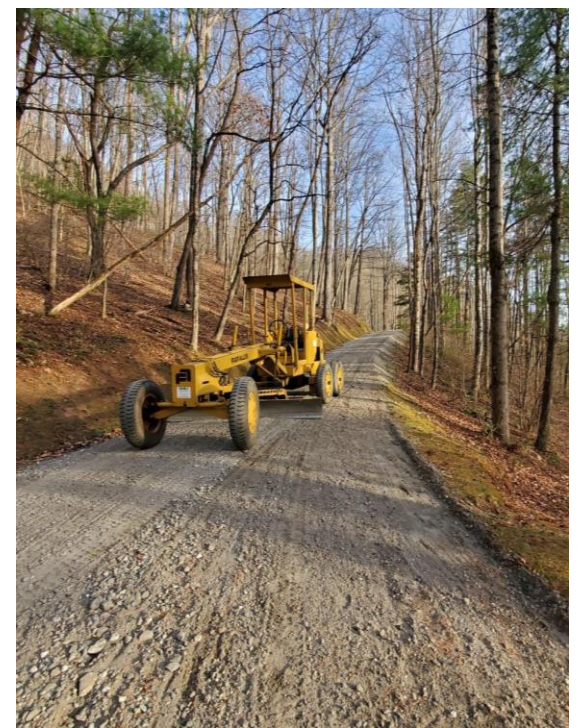
Fertilizing



Weeding



Pest and Disease Control

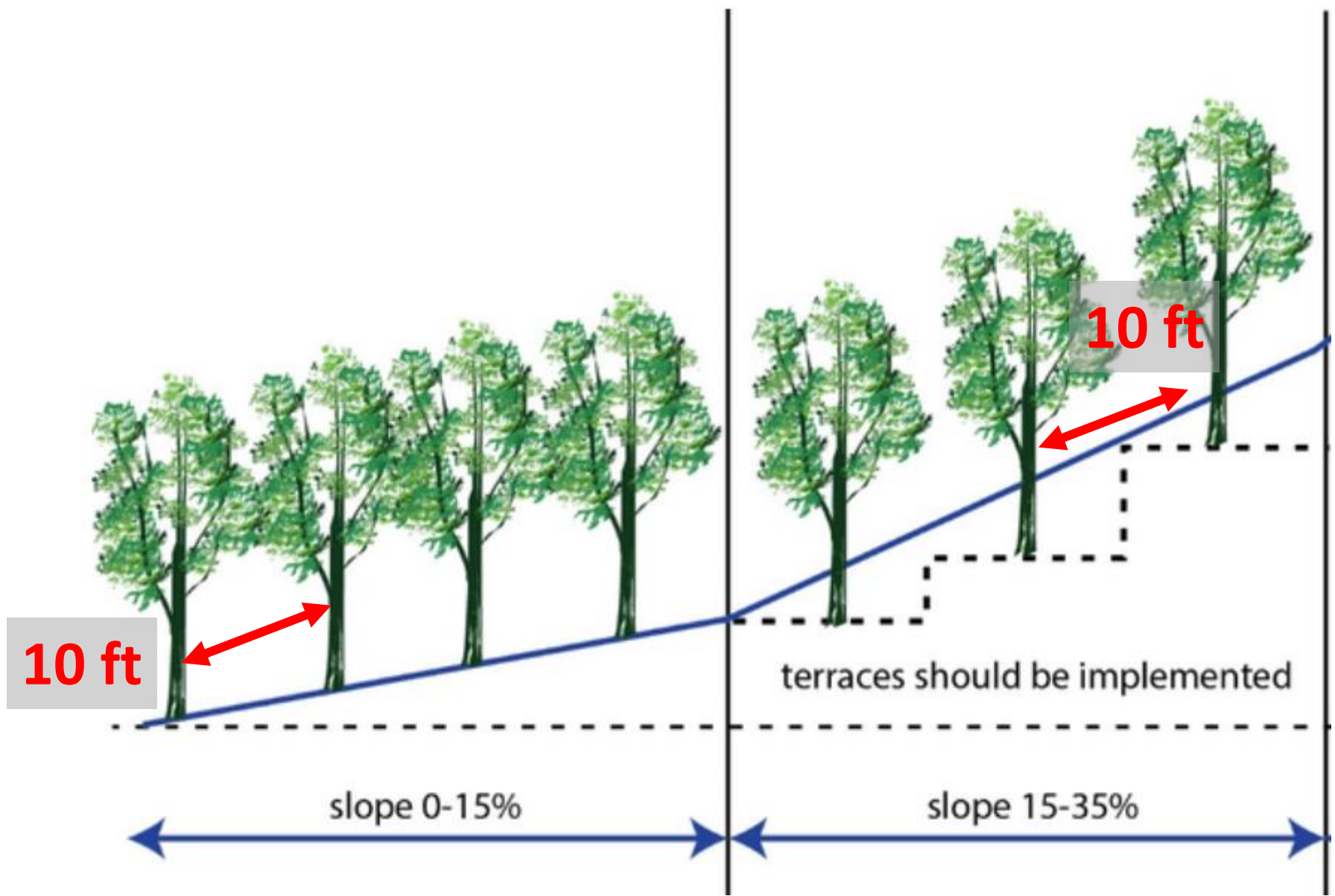


Road Maintenance



# Fertilizing







# Weeding



# Pest and Disease Control





# Road Maintenance

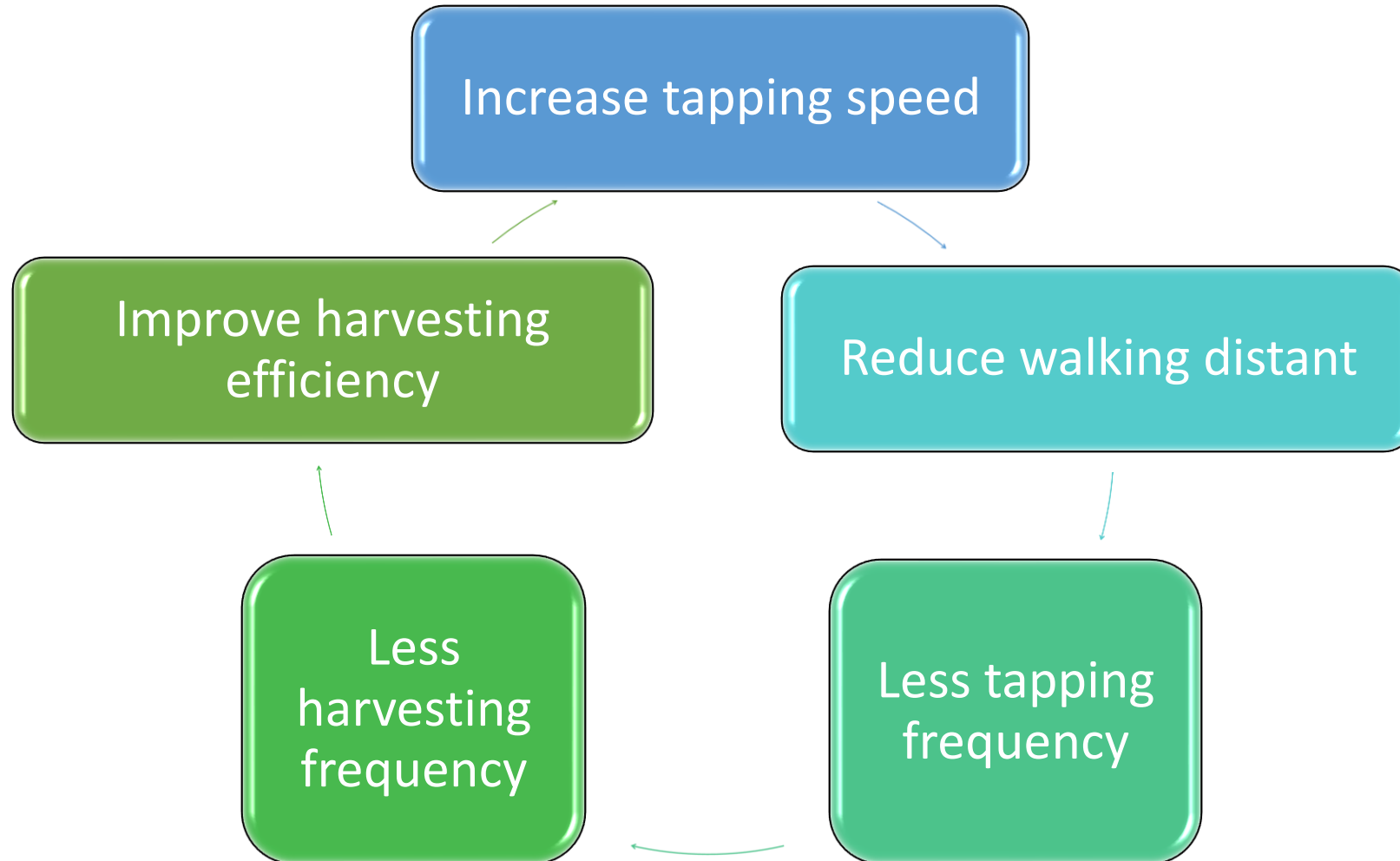


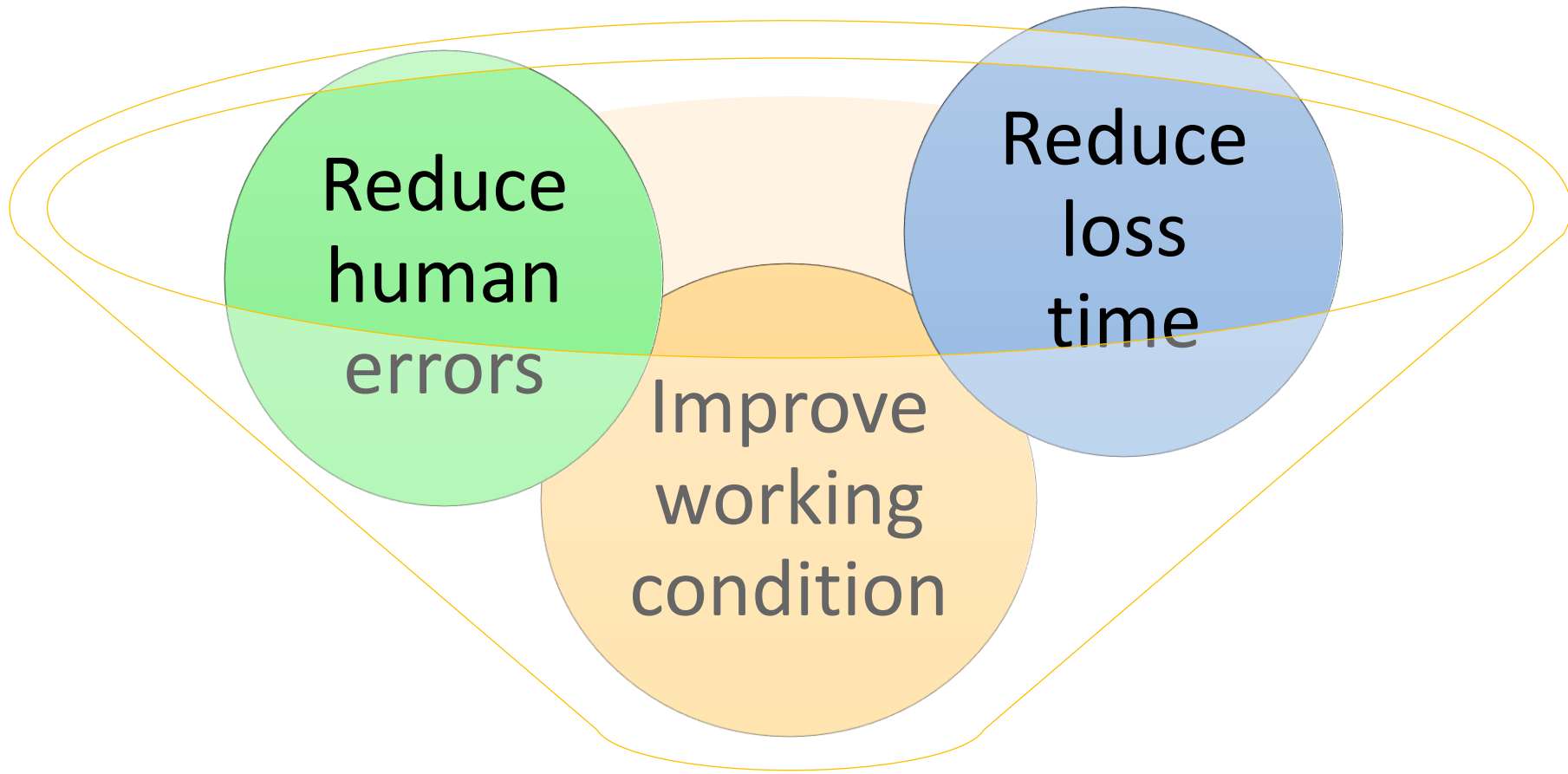
An illustration depicting a journey towards a goal. A wide, yellow, upward-curving path leads from the bottom left towards a large target on the right. Several stylized human figures are shown on the path: one at the start with a megaphone, others running and climbing. In the background, there are green hills, a blue sky with clouds, and a paper airplane flying along a dashed blue trajectory. The central text is overlaid on a yellow rectangular background.

**WHAT DO WE WANT TO  
ACHIEVE?**



# Increase hectarage coverage per worker without sacrificing yield per hectare

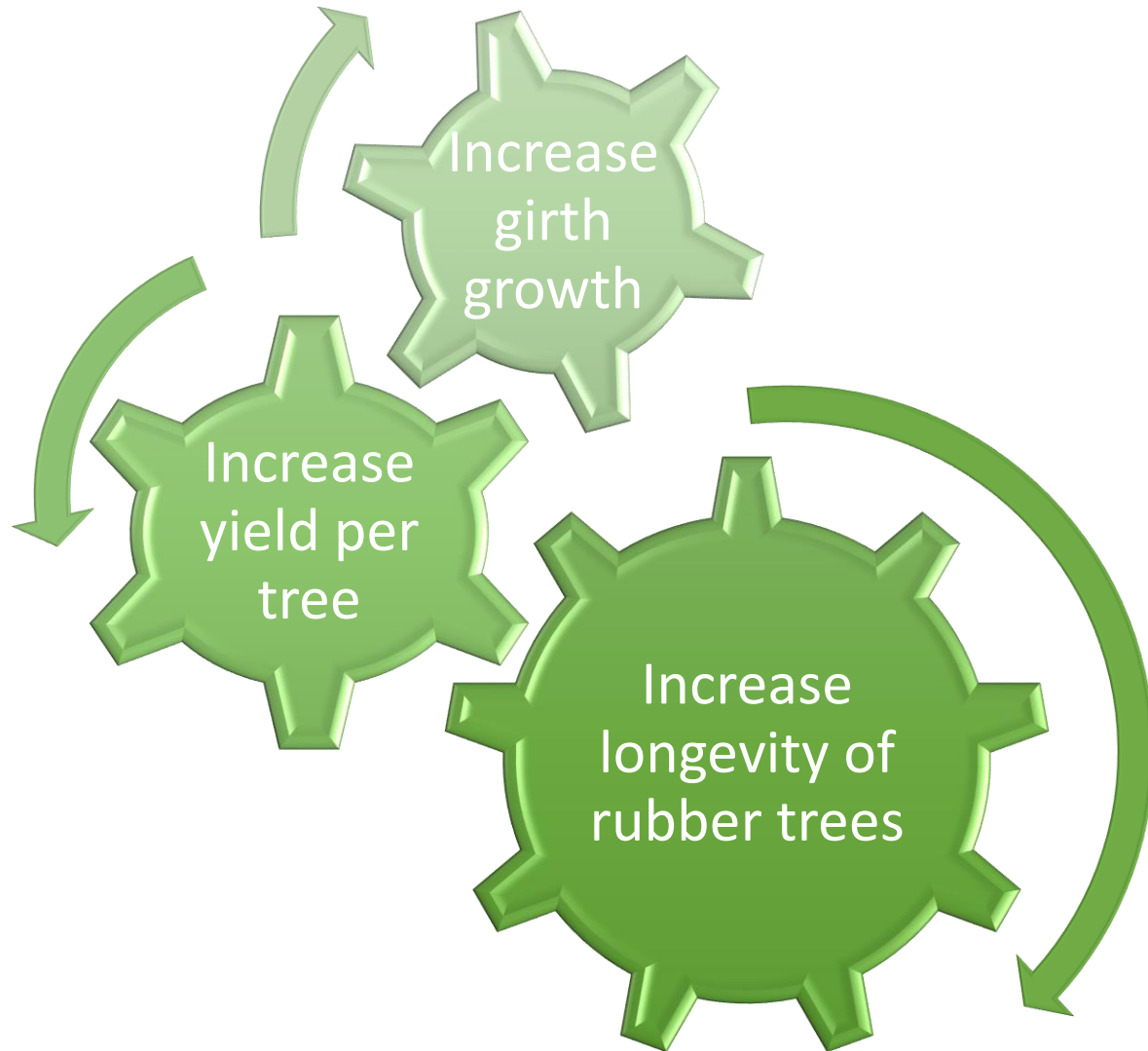




**INCREASE PRODUCTIVITY PER WORKER**



# Increase productivity per tree









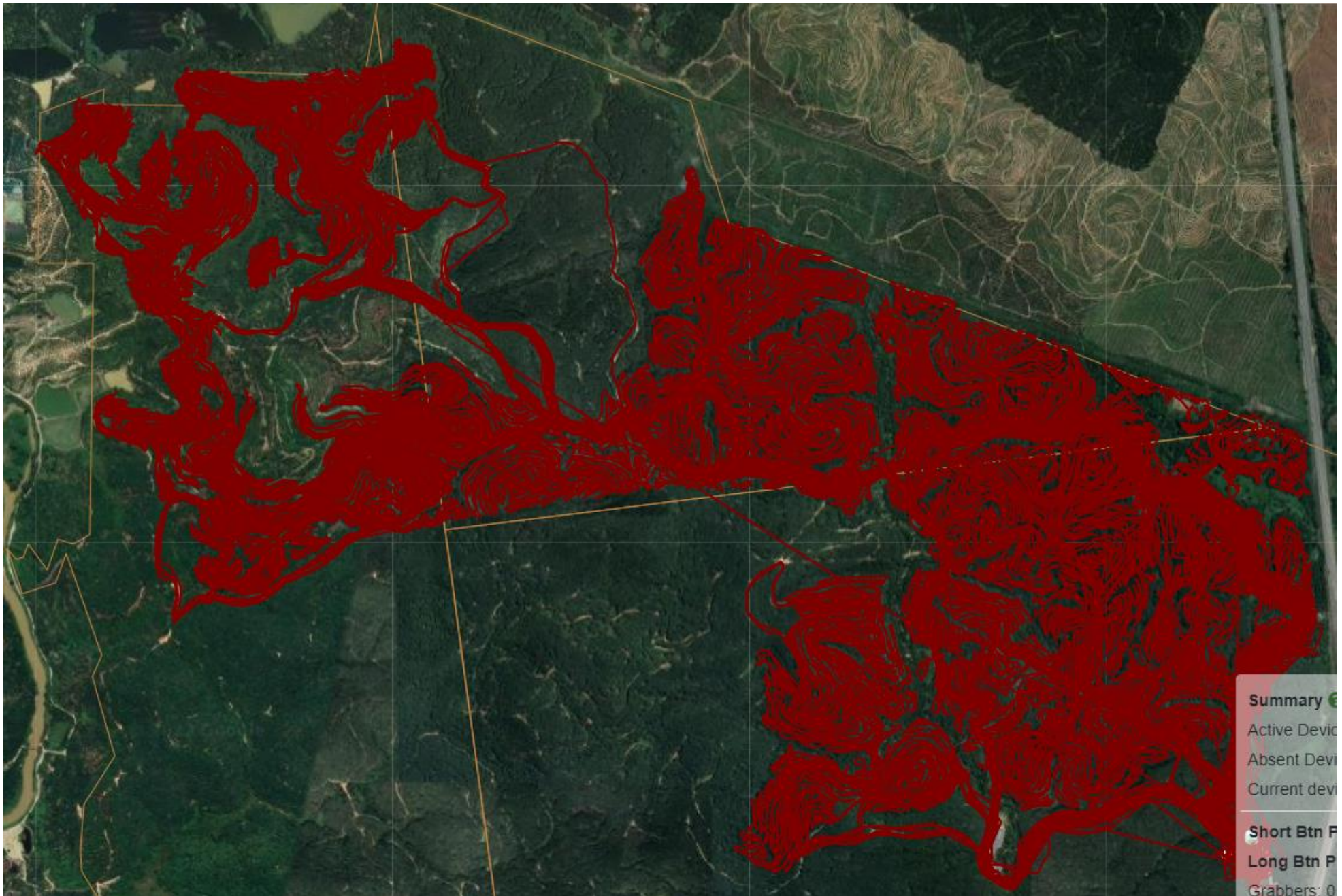






Fig. 40.  
Gouge ordinaire,  
(Vernel).



Fig. 41.  
ReINETTE de ferreux.



Fig. 42.  
Gouge triangulaire.



Fig. 43.  
"Pricker" Barryde.



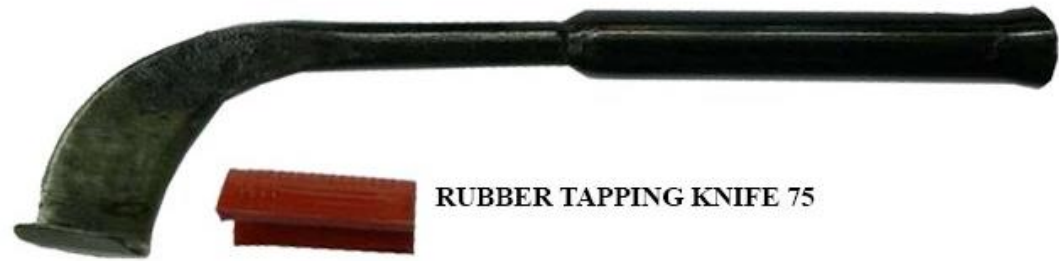
Fig. 43 bis.  
Gouge Burgess.



Fig. 44.  
Couteau Soulier.



Fig. 45.  
Inciseur Barryde.



RUBBER TAPPING KNIFE 75



RUBBER TAPPING KNIFE 80

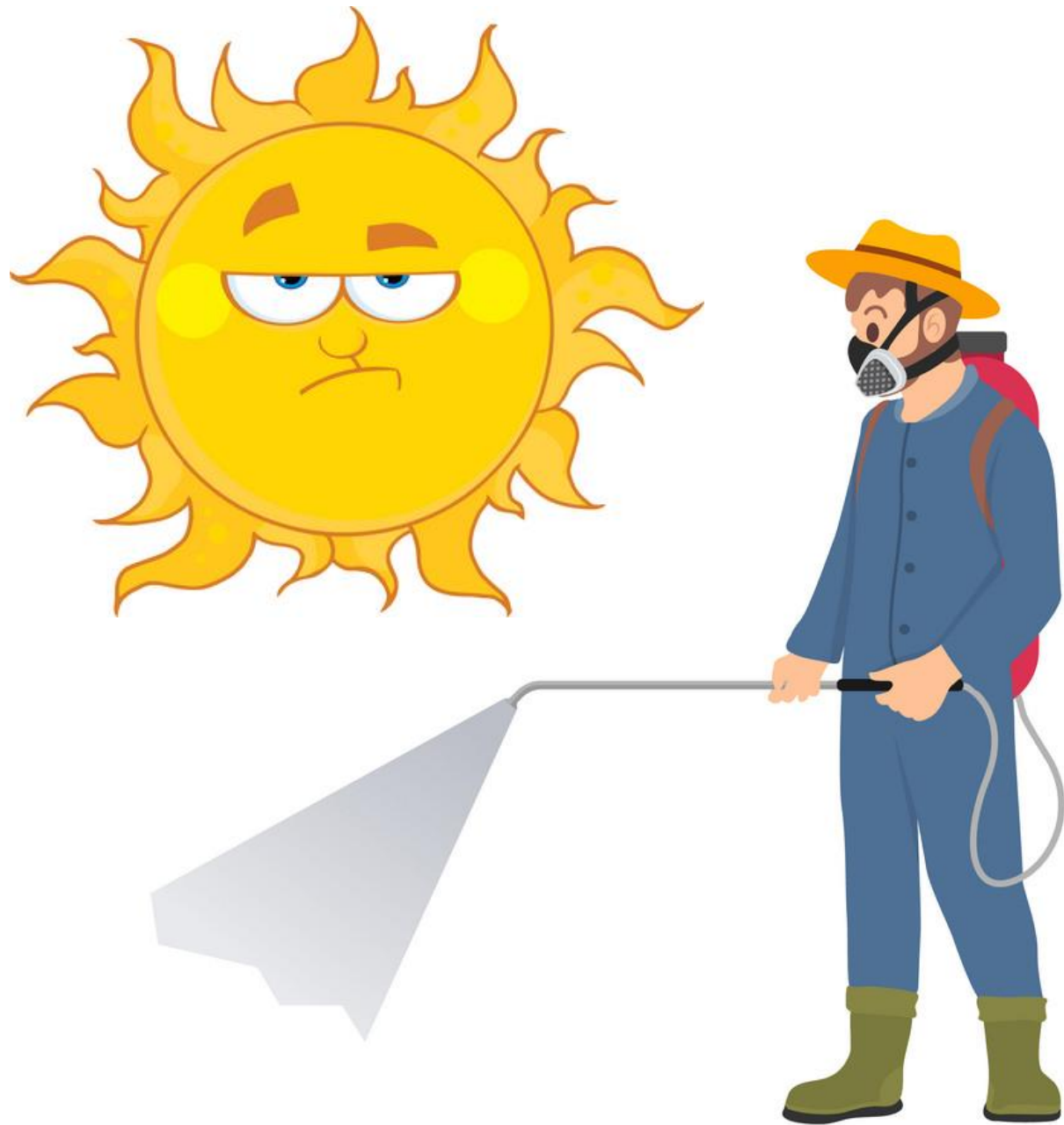


RUBBER TAPPING KNIFE 311













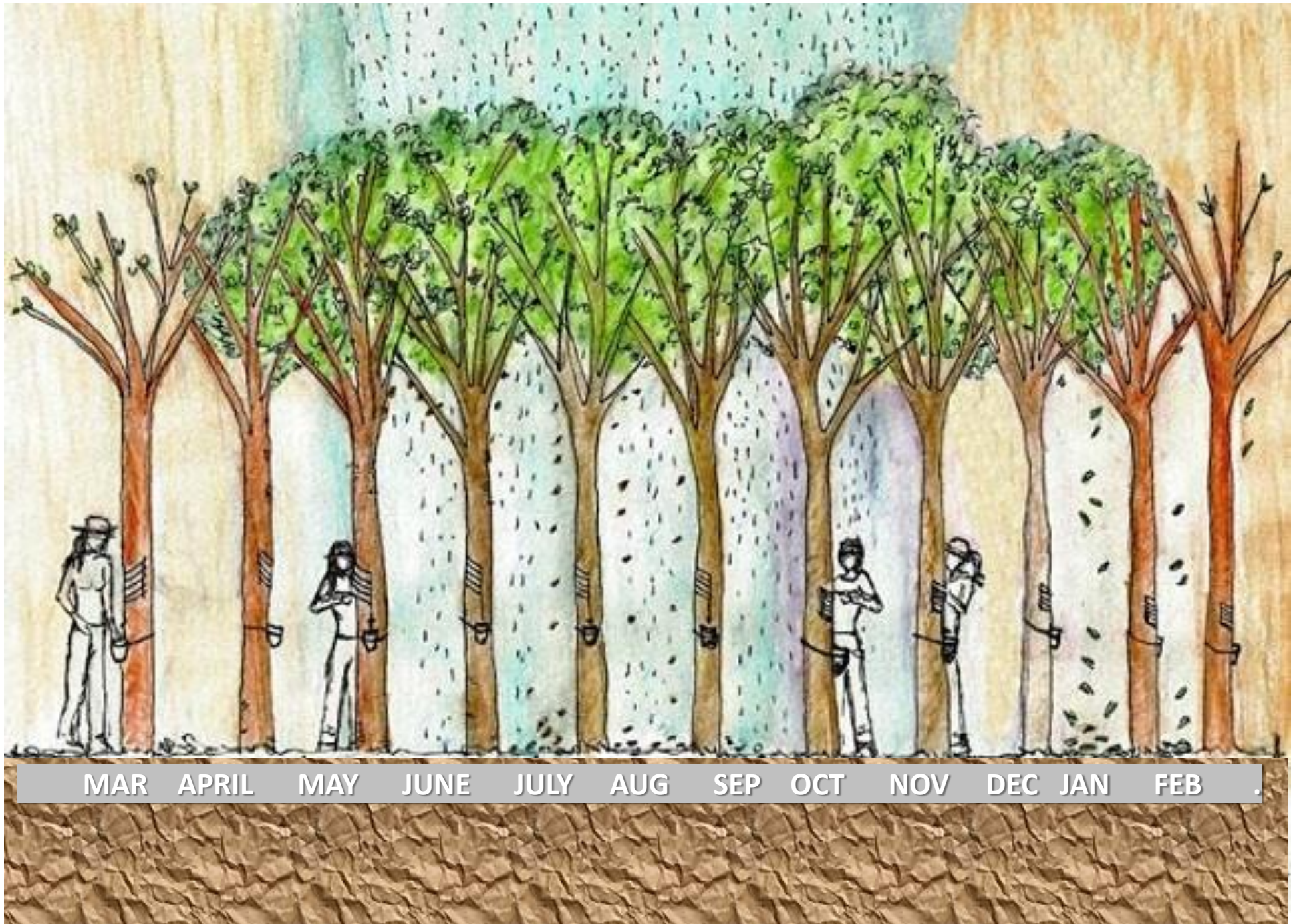












MAR APRIL MAY JUNE JULY AUG SEP OCT NOV DEC JAN FEB .



32 °C | °F

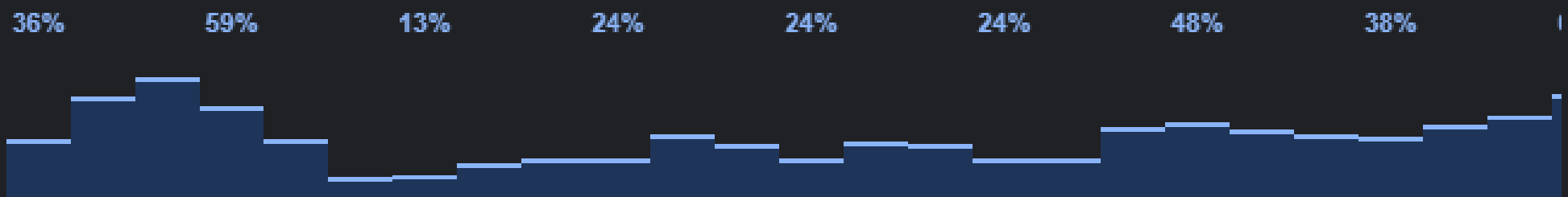
Precipitation: 70%  
Humidity: 74%  
Wind: 11 km/h

# Weather

Friday

Scattered thunderstorms

Temperature | Precipitation | Wind



1 pm

4 pm

7 pm

10 pm

1 am

4 am

7 am

10 am

Fri



32° 24°

Sat



31° 24°

Sun



31° 24°

Mon



31° 24°

Tue



31° 24°

Wed



31° 24°

Thu



29° 24°

Fri



31° 24°







